



COMPANY PROFILE 2025

OUR HISTORY

- iMed Inc was established with a thorough strategy spanning over a decade, focused on the refurbishment of leading brands such as Philips, Shimadzu, GE, Siemens, and Toshiba in various X-Ray Modalities.
- **Additionally**, the company is involved in Computerized Radiography Processing digital radiography and imaging Hard Copies solutions with brands such as Fujifilm, AGFA, Carestream, and Konica.
- **Furthermore**, iMed Inc has formed partnerships with various Chinese manufacturers of X ray machines, including SWM, YZ, and Perlong as well as several South Korean companies such as Poskom, DK Medical System, DRGYM, Ecotron and Listem acting as distributors within the Egyptian market.
- iMed Inc specializes in high end technology of radiology processors, encompassing digital processors digital radiography (DR), and software imaging acquisitions.



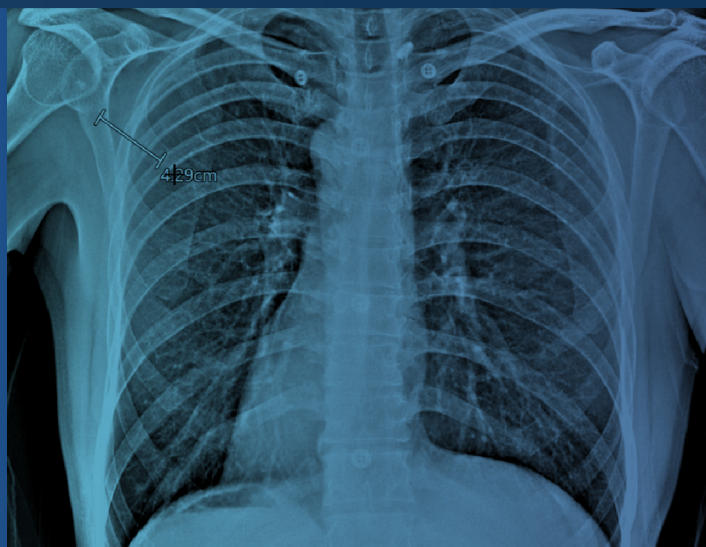
OUR HISTORY

- **iMed Inc** has been active in the Radiology sector for more than a decade and is currently providing a wide range of Radiology solutions across the MENA region.
- **Since 2015**, iMed Inc has expanded its operations nationally, extending its reach to countries including the MENA countries; Egypt, Libya, Sudan, Syria, Iraq, Palestine, Turkey, and others.
- **The company** has created an innovative diagnostic environment by launching a comprehensive portfolio of radiology services.
- **iMed Inc** has the necessary expertise to fulfill customer needs in both Africa and the Middle East.



WHO DO WE CURRENTLY REPRESENT?

- **iMed Inc**, After over a decade of engagement in the field of diagnostic radiology technology and following multiple experiences, we initially served as agents for prominent brands and subsequently took on the role of authorized commercial representatives for the largest consumer region globally, encompassing Africa and the Middle East.
- **In 2022**, the company made a strategic decision to transition towards manufacturing under its own brand, iMed Inc, commencing with high quality technical projects utilizing an OEM strategy.
- **This shift** proved fortuitous, as investments began to flourish, leading to a series of successive successes.
- **We soon** recognized significant gaps within the industry, which remained in need of comprehensive solutions.
- **In response**, we adopted the slogan inspired by our clients: "Inspire your Mind".



WHO DO WE CURRENTLY REPRESENT?



- This initiative positioned us as one of the pioneering manufacturers capable of transforming customer aspirations into reality by providing devices tailored to their specific regional requirements, all while adhering to international standards rather than merely local ones.
- Since 2023, the company has further expanded its manufacturing capabilities through the ODE strategy.
- We now operate actual production lines across multiple countries, supported by a robust manufacturing environment backed by government initiatives that facilitate numerous advantages for investors.
- Our extensive production facilities are located in Taiwan, South Korea, China, and Türkiye, enabling us to export our products to international markets prior to their introduction in local markets.
- All production lines are unified under a single platform known as iMed Inc.
- This entity is represented by the scientific office of the iMed Inc. factories group, serving the Africa and Middle East region from locations in Dubai , the United Arab Emirates and Istanbul ,Turkey.

Where Are We Now?

ADDRESS OF LINES PRODUCTION:



1- Medical Monitors Industry; Made in China

ADDRESS OF LINES PRODUCTION:

Longhua District, Shenzhen, Shenzhen, Guangdong Province, China,



2- Flat Panel Detector Industry ; Made in Korea

MANUFACTURE ADDRESS:

Gajeongbuk ro , Yuseong gu , Daejeon
311MANUFACTURED IN SOUTH KOREA,
REPUBLIC OF KOREA (ROK)



3- Flat Panel Detector Industry ; Made in Taiwan ,

Room B, No. 2, Sec. 2,
Huansi Rd., Tainan city, Southern
Taiwan Science park, 74144, Taiwan (R.O.C)



4- Xray Machine System Industry ; Made in Turkey

ADDRESS OF LINES PRODUCTION:

H. Rifat Pasa Yüzer Havuz Sk. Perpa Ticaret Merkez B
Blok Kat:13, No:2552 34384 SiSli /Istanbul Türki



Scientific office in Dubai , UAE

Address of Gulf Scientific Office:

Suite 2401 Saeed2 Tower Dubai World Trade Center District
Sheikh Zayed Road Dubai, UAE

TECHNOLOGIES INTRODUCED



iMed-Healthineers is a pioneer of Radiology Technologies with Neu Vision



Partners Around **The World**



17
COUNTRIES

23
DEALERS
2024

Headquarter Suite 804 Saeed2 Tower-Dubai World Trade Center District 1- Sheikh Zayed Road, Dubai - United Arab Emirates



OUR LOGO CONCEPT



The logo concept for iMed Inc logo is crafted to embody the fundamental principles of innovation, accuracy, precision, and significant influence within the medical technology sector.

The Dynamic Fluid, interlinked forms within the logo illustrate the synergy between science, technology, and healthcare, evoking molecular structures that highlight the life sciences and ongoing development.

The blue hue signifies trust, dependability, and a dedication to excellence, qualities that are vital in the healthcare domain.

The tagline "Inspire Your Mind" enhances the visual components, underscoring iMed Inc's commitment to education, research, and advancing the frontiers of medical innovation.



OUR SLOGAN

INSPIRE OUR MIND,

- Our slogan was developed from insights obtained through client surveys conducted in previous years. Customers conveyed their conviction that their dreams and goals could be effectively pursued with the support of the IMED company.
- It is crucial to stimulate your thoughts and unleash your creativity, as we are dedicated to bringing these aspirations to life, as long as they promote scientific progress and aid in the healing of the sick.

OUR VISION



- **To** be a global leader in the manufacturing of innovative medical equipment, specializing in radiology, that enhances diagnostic accuracy and improves patient outcomes.
- **We** envision a future where our state of the art technology empowers healthcare professionals to deliver exceptional care, ultimately transforming the landscape of medical diagnostics.

OUR MISSION



Our mission is to create, develop, and produce high quality medical devices specifically designed for the radiology field. We are dedicated to enhancing healthcare through:

Innovation: Consistently investing in research and development to produce state of the art radiological technologies that address the changing demands of healthcare providers.

Quality: Maintaining the highest standards of manufacturing excellence to ensure our products are dependable, safe, and effective for medical applications.

Collaboration: Working closely with healthcare professionals and institutions to gain insights into their challenges and deliver solutions that improve diagnostic capabilities.

Education: Providing extensive training and support to users of our equipment, enabling them to maximize its potential for better patient care.

Sustainability: Adopting environmentally responsible practices in our manufacturing processes, contributing to a healthier planet while offering superior medical solutions.

Through these guiding principles, iMed Inc aims to lead the way in radiology equipment manufacturing, making a meaningful impact in the medical sector and enhancing the quality of life for patients around the globe.

OUR CORE VALUES



Customer Focus

Our dedication lies in recognizing and appreciating the distinct characteristics of our customers, ensuring that our engagements demonstrate a profound understanding of their specific needs and preferences.



Superior Design and Technology

We emphasize the acquisition of premium design and cutting edge technology for our machines, providing innovative solutions that adhere to the highest standards in the medical industry and ensure customer satisfaction.



Innovation and Empowerment

Our goal is to foster successful and profitable collaborations by offering the most advanced technology in our machines, enabling healthcare professionals to make precise diagnoses and enhance patient care outcomes.



Collaboration and Partnership

We value the strength of collaboration and the establishment of robust partnerships with our customers, suppliers, and stakeholders to promote shared success and innovation.



Integrity and Quality

We are committed to maintaining integrity and quality in all our activities, ensuring that our products and services not only meet but surpass industry standards, thereby fostering trust with our customers and stakeholders.

OUR GOALS

- **Enhance Patient Health:** The primary objective is to enhance patient health outcomes by delivering high quality and dependable radiology equipment.
- **Promote Technological Advancement in Radiology:** Foster innovation in radiological technologies to align with medical progress and the changing demands of healthcare.
- **Broaden Access to Diagnostic Services:** Through the production of reliable and potentially affordable equipment, the initiative seeks to improve access to quality radiological diagnostic services.



We are utilizing a strategic approach
“SMART”



Specific

Adopt a customer centric strategy by performing comprehensive research to gain insights into customers' distinct needs and preferences, which will facilitate customized interactions and solutions.



Measurable

Evaluate customer satisfaction through feedback surveys and monitor improvements in customer retention rates as a result of personalized engagement.



Achievable

Dedicate resources to customer research, provide training for staff on customer oriented practices, and establish feedback systems to assess customer satisfaction.



Relevant

Strengthen customer relationships and loyalty by tailoring services to meet individual customer needs, thereby enhancing the overall customer experience and boosting business performance.



Time Bound

Finalize the execution of customer focused strategies within the next six months, incorporating regular assessments and modifications based on customer feedback.

OUR OBJECTIVES

Design and Development

- Create innovative designs for radiology modalities that enhance image clarity, minimize radiation exposure, and improve patient comfort.
- Work in partnership with radiologists and medical researchers to incorporate cutting edge advancements into the equipment designs.

Manufacturing Quality and Efficiency

- Enforce stringent quality control measures to guarantee that all equipment meets or surpasses industry standards.
- Streamline manufacturing processes to boost production efficiency while maintaining high quality.

Regulatory Compliance

- Keep informed about all pertinent medical device regulations and ensure complete adherence throughout the manufacturing process.
- Secure necessary certifications and approvals for the equipment.

Market Penetration

- Formulate a comprehensive marketing strategy to increase product awareness among healthcare professionals.
- Build effective distribution networks to ensure widespread availability of the equipment.

OUR EXPECTED OUTCOMES

Improved Diagnostic Precision:

The utilization of state of the art radiology technology results in superior image clarity, facilitating more precise diagnoses.

Enhanced Patient Safety:

Minimized radiation exposure combined with an improved ergonomic design contributes to safer procedures for patients.

Expanded Access to Care:

An increased number of healthcare facilities, particularly in underserved regions, gain access to high quality radiology equipment, allowing more patients to receive timely and accurate diagnoses.

Market Leadership:

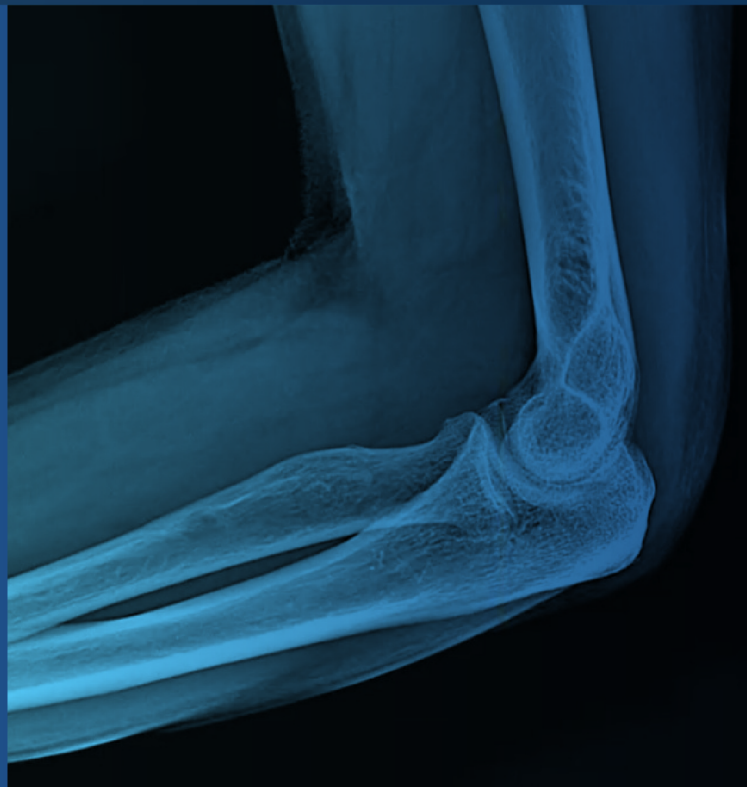
The initiative cultivates a reputation as a pioneer in the radiology equipment sector, securing a substantial share of the market.

Financial Viability:

The initiative achieves financial independence through equipment sales, with profits reinvested into continuous research and development.

OUR COMMITMENT

- Our dedication to quality, dependability, and ongoing enhancement will propel us to create cutting edge imaging technologies and services that not only fulfill but surpass the expectations of our partners and clients.
- By leveraging advanced analytics, artificial intelligence, and exceptional expertise, we intend to transform the practice of radiology, enabling faster diagnoses and more informed treatment choices.
- As we expand, we will remain steadfast in our commitment to building partnerships with healthcare organizations, researchers, and industry leaders to challenge limits and investigate new possibilities in radiology.



OUR COMMITMENT

- Our goal is to achieve the status of MARKET LEAD by establishing a reputable brand that reflects integrity, professionalism, and a patient centered approach.
- Through our unwavering pursuit of excellence and a profound commitment to the communities we serve, we aim to not only reshape the radiology landscape but also to set a standard for operational excellence and innovation within the healthcare industry.
- Our holistic strategy will support a sustainable business model that fosters positive change and enhances the well being of patients everywhere. Together, we will define the future of radiology and emerge as the clear leader, contributing to a healthier tomorrow for all.



COMPANY STRUCTURE





BUSINESS MODEL

KEY PARTNERS <ul style="list-style-type: none"> Local Distribution Partners. Exclusive Global Foreign Partners. VIP-Radiology Centers. 	KEY ACTIVITIES <ul style="list-style-type: none"> New Brand every year. Build-up new relations. Growing-up activities. Workshops. Medical Conferences. KEY RECOURSES <ul style="list-style-type: none"> Brand Name. Self-Financing. Offers with cash-in-advance 	VALUE PROPOSITIONS <ul style="list-style-type: none"> Consultancy Sales. After Service-Sales specially with new deals. Loyalty Program with current customers. No Installment over your fees. Stock-Queued. Sharing Offers. Donations for some real kind associations. 	RELATIONSHIPS <ul style="list-style-type: none"> Commercial Discounts for Distributions. Open your business wiyh any budget. Regular hot offers. Company any where. CHANNELS <ul style="list-style-type: none"> Local & Missle East Sales Support. Multi-Products Sales Force. 	CUSTOMER SEGMENTS <ul style="list-style-type: none"> Governmental Hospitals/Clinics. Military Hospitals/Clinics. Radiology Centers (All Classes). Radiology Doctors' Clinics (All Classes). Radiology Technicians (All Classes). Associations Clinics. Mobile Medical Caravans.
COST STRUCTURE <ul style="list-style-type: none"> Consultancy Cost. Installment Cost. Marketing Activities Cost. Workshops and Periodic Conferences Costs. Networking and Financing Systems Costs. 		REVENUES STREAMS <ul style="list-style-type: none"> Sales after consultancy. Sales during-after workshops and medical conferences. Service-Sales contracts Revenues. Legitimate associations Revenues. Churches associations Revenues. 		



BUSINESS SEGMENTS



Human Medical

- CR- DR
- X-Ray
- Medical Monitors
- Ultrasound
- DEXA Modality
- Panorama
- Mammography
- C-Arm
- Medical Printers
- Software



Refurbished

- CR
- X-Ray
- Ultrasound
- Panorama
- Mammography
- C-Arm



Medical Consultancy

- Search for Products
- Negotiations
- Contracts
- Exporting – Importing
- iMed Academy



Out of Box

- OEM
- WEB Market
- Clinic Management

BUSINESS CUSTOMERS



SIEMENS

FUJIFILM

PHILIPS

AGFA 



Carestream

PENTAX
MEDICAL



SOPRO COMEG



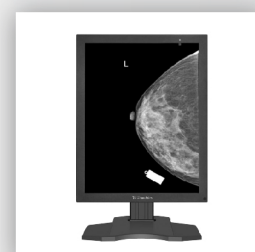
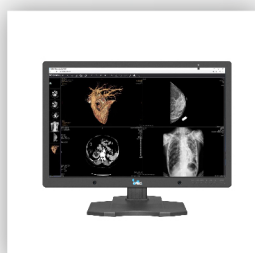
SonoScape

BUSINESS PARTNERS





PRODUCTS UMBRELLA





CONTACT US



Head Office:

Suite 2401 Saeed2 Tower - Dubai World Trade Center District -
Sheikh Zayed Road - Dubai, UAE



Tel/Fax: +971 43337118

Sales-Team: +971 58 582 4100

Technical Support-Team: +971 58 546 4100



www.imed-inc.com



[iMedRadiology](#)



[imed-inc-company](#)
