

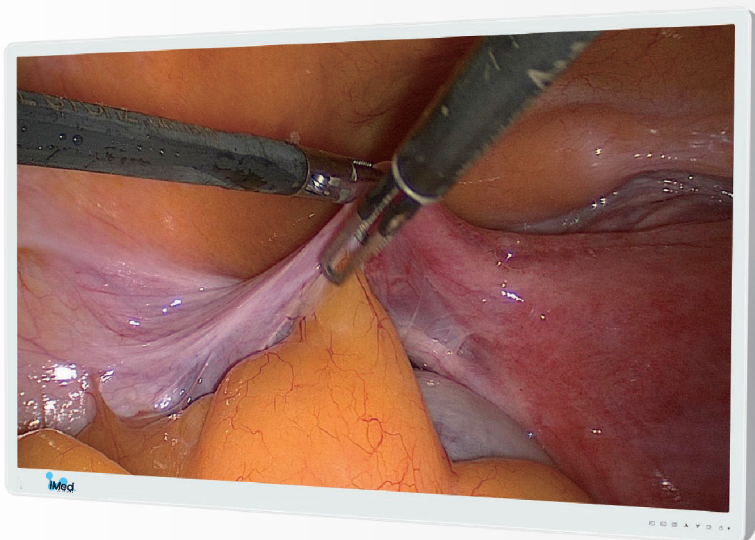
# SURGICAL DISPLAYS



# iM-MS550P

## 55"

4K UHD, AR ANTI-GLARE  
PROTECTIVE FRONT GLASS,  
MUTIPLE SIGNAL INTERFACES



[www.imed-inc.com](http://www.imed-inc.com)



MADE IN CHINA



# iM-MS550P

## 55"

### 4K UHD, AR ANTI-GLARE PROTECTIVE FRONT GLASS, MUTIPLE SIGNAL INTERFACES

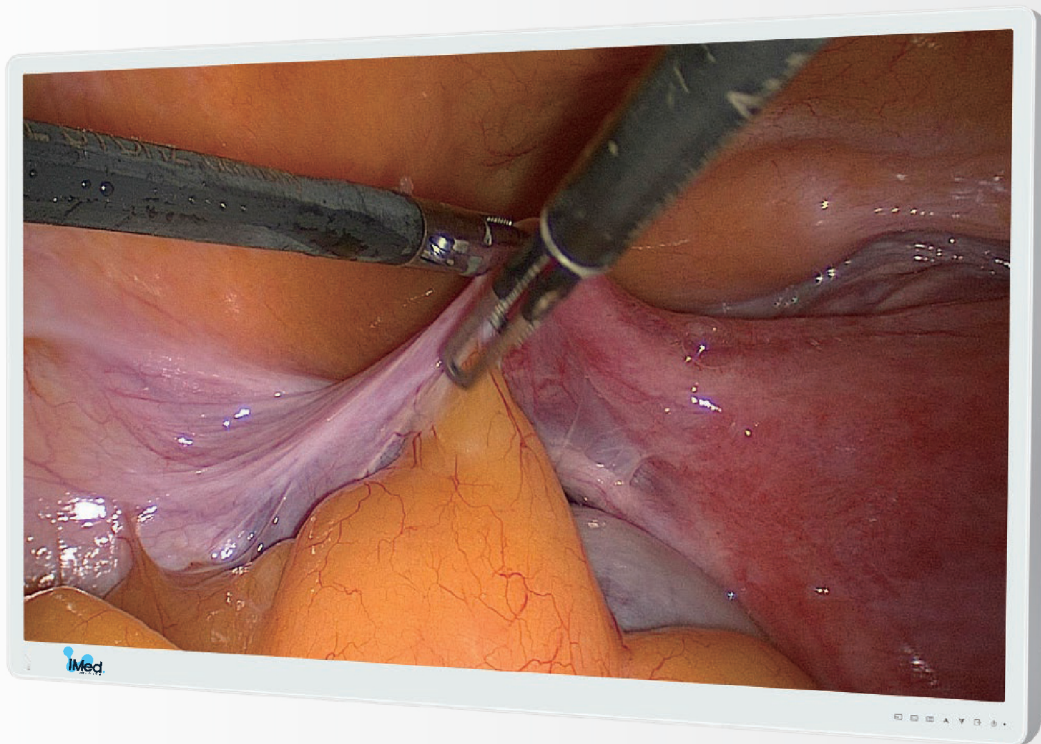
The iM-MS550P is a 55-inch 4K UHD surgical display that features a high-resolution IPS screen with a resolution of 3840x2160 pixels, and a front-facing ultra-hardened, high-transparency, low-reflection tempered glass.

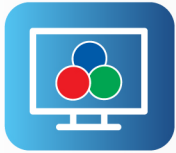
It is all-fit designed, effectively prevents dust and liquid contamination during surgical procedures, and suitable for operating rooms with high-level purification requirements.

The product is equipped with multiple signal interfaces, suitable for a variety of image displays, and is specially equipped with a 12G-SDI module that supports real 4K UHD image.

It comes with a professional SDI cable that supports ultra-long distance of over 50 meters, with uncompressed transmission and strong anti-interference ability while easy installation.

This feature makes it an excellent choice for clean Operating Rooms.





**True Color  
Reproduction**



**Ultra HD 4K Display**



**LED Backlight**



**Exquisite and  
Real Image**



**Full View  
Displaying Panel**



**Comply with  
International  
Medical Standard**

## IPS

Display Size	55"
Color	1.07B
Resolution	3840×2160
Display Ratio	16 : 9
Brightness	700 cd/m <sup>2</sup>
Contrast Ratio	1100 : 1 (TYP)
Viewing Angle	178°/178°
Response Time	8 ms (TYP)
Input Ports	HDMI*3/ DP*2/ ( 12G-SDI/ 3G-SDI*4)
Output Ports	HDMI
Power Supply	AC100 - 240V
Power Consumption	≤300W max
MTBF	>30,000h
Structural Appearance	White Metal Shell , Front Protective Glass
Dimension	1262.4*755*89.2mm (W*H*D) (Without Stand)
Weight	36.5±0.5 kg (Without Stand)
Installation Standard	VESA 200x200 mm / VESA 400x240 mm
Application	Digital Video-endoscope System / ENT



# CONTACT US



## **Medical Monitors Industry; Made in China**

ADDRESS OF LINES PRODUCTION:

Longhua District, Shenzhen, Shenzhen, Guangdong  
Province, China,



Tel/Fax: +971 43337118

Sales-Team: +971 58 582 4100

Technical Support-Team: +971 58 546 4100



[www.imed-inc.com](http://www.imed-inc.com)



[iMedRadiology](#)



[imed-inc-company](#)

---