

# FIXED X-RAY SYSTEMS



## FIXED VET X-RAY SYSTEMS



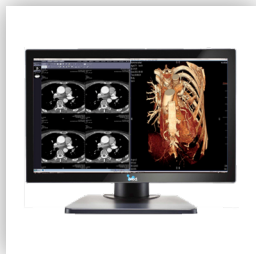
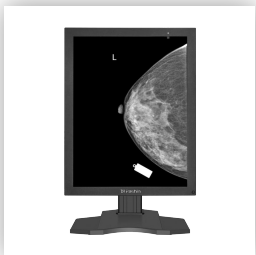
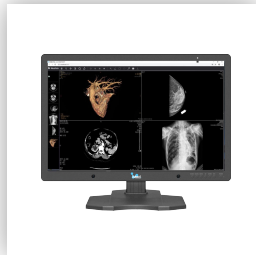
[www.imed-inc.com](http://www.imed-inc.com)

 MADE IN TURKEY



# iMed.

Inspire Your Mind



# FIXED X-RAY

Series: IMCO-325VET / IMCO-525VET / IMCO-550VET /  
IMCO-650VET

## IMCO VET SERIES

### 4-WAY FLOATING TABLE X-RAY



**DIGITAL RADIOGRAPHY SYSTEM**  
**MOTORIZED AUTO TRACKING**

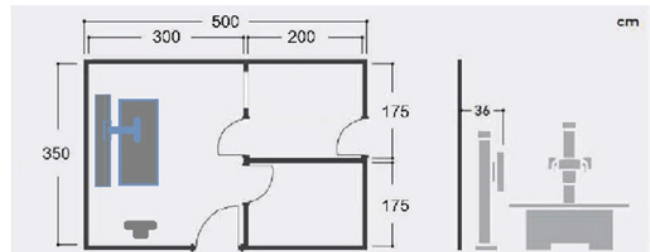


# FIXED VET. X-RAY

## Technical Specificatis

Model	IMCO-325 VET	IMCO-525 VET	IMCO-550 VET	IMCO-650 VET
H.V Generator	20KW Max Output, 25-300mA	36KW Max Output, 25-500mA	40KW Max Output, 25-500mA	50KW Max Output, 25-630mA
X-Ray Tube	Canon 7239 (1.0/2.0mm),40-125KV, Rotating Anode		Canon 7843 (optional 7884) (0.6/1.2mm), 40-150KV, Rotating Anode	
17"x17" Flat Panel Detector	Single / Dual as Option	IPCS	Single / Dual as Option	IPCS
X-Ray Tube Synchronous movement with chest bucky function	Yes		Yes	
Standard Modification	LED Collimator, SID control touch screen, Tube stand, Electric Chest Bucky stand, Fixed Electricomagnet 4 way Floating table, PC & monitor, Acquisition Software			
Grid for bucky table/stand	Yes	Yes	Yes	Yes
10inc Touch Screen Console	Yes	Yes	Yes	Yes
AEC Electric Elevating Table	Optional	Optional	Optional	Optional
Collimator Synchronous movement with table bucky function	Optional	Optional	Optional	Optional
Dry Film Printer	Optional	Optional	Optional	Optional
Medical Grade Monitor	Optional	Optional	Optional	Optional
PACS Software	Optional	Optional	Optional	Optional

## Recommended Installation Room Layout



## DR SOFTWARE iMED Veterinary SOFTWARE IMAGE ACQUISITION

### Patient Case Management

- Management of patient information, examination information, and images
- DICOM3.0 standard Worklist query service function can query and download case information from HIS/PACS

### Image Processing

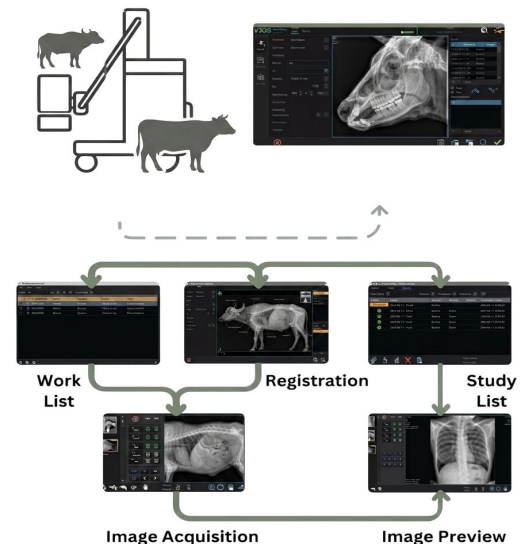
- Positive & negative film conversion, image zooming, translation, flipping, rotation, and magnifying glass display
- Original display/full screen display/ histogram display, window width & level adjustment of the target zone can be selected
- Image annotation function, including orientation and text
- Real time automatic ROI cropping

### Image output

- DICOM3.0 standard laser/thermal printer output allows for easy selection of configured solutions (film size, layout) to do printing
- DICOM3.0 standard archiving service function can archive images to the server and support automatic sending in the background
- Image backup function, backup images burned to CD/DVD, the backup disc comes with a browser to automatically play images
- Image export can export patient examinations to a specified location

### Image stitching function

- Manual Stitching/ Image left-right automatic stitching/ Image up-down automatic stitching



# FIXED VET. X-RAY

Series: MAX-325VET MAX-525VET MAX-550VET  
MAX-650VET

# IMCO VET. SERIES

4-WAY FLOATING  
TABLE X-RAY



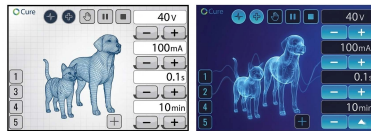
**DIGITAL RADIOGRAPHY SYSTEM  
MOTORIZED AUTO TRACKING**

STANDARD



Keyboard Console for Condition  
Setting & Exposure Cover all Patient  
type and All Body Position

CONSOLE



A smooth anatomical program  
for storing and selecting factors

X-RAY TUBE CONSOLE



Characteristic:

- 7" Touch Screen of SID setting & control / tube Assembly synchronous movement with chest bucky
- Button control
- Tube-stand latera I movement
- Tube Assembly Longitudinal movement
- Remote Control Chest Bucky Up-down movement
- One Button tube Assembly synchronous movement with chest bucky



# FIXED VET. X-RAY

## Specifications of The X-Ray System

Generator	IMCO-325 VET	IMCO-525 VET	IMCO-550 VET	IMCO-650 VET
Max. Output	20KW	36KW	40KW	50KW
mArange	25-300mA	25-500mA	25-500mA	25-630mA
kV range	40-125KV	40-125KV	40-150KV	40-150KV
mAs range	0.4-400 mAs	0.4-500 mAs	0.4-500 mAs	0.4-550 mAs
Power supply	1ph 220v	1ph 220v , 2 ph 380v	3 ph 380v "optional 1ph 220"	3 ph 380v "optional 1ph 220"
Exposure time	0.02-5 Sec	0.02-5 Sec	0.02-5 Sec	0.02-5 Sec
No. of APR	240	240	240	240
Option	AEC	AEC	AEC	AEC

X-ray Tube	IMCO-325 VET	IMCO-525 VET	IMCO-550 VET	IMCO-650 VET
Focal spot	1.0/2.0mm	1.0/2.0mm	0.6/1.2mm	0.6/1.2mm
Anode type	Rotating Anode	Rotating Anode	Rotating Anode	Rotating Anode
Anode heat capacity	150kHU	150kHU	150kHU/300KHU optional	150kHU/300KHU optional
Target angle	12°	12°	12°	12°
Voltage range	40-125KV	40-125KV	40-150KV	40-150KV
Permanent Filtration	0.9mmAL	0.9mmAL	1.3mmAL	1.3mmAL
Tube model	Canon 7239	Canon 7239	Canon 7843/ optional 7884	Canon 7843/ optional 7884

Collimator	IMCO-325 VET
Power supply	24V AC/DC 50/60Hz
Max. kVp shield	150 kV
View Range	Min: 2 X 2
Inherent filtration	Max:43 x 43
Lamp luminosity	≥ 180 lux
Lamp time	30sec
Field size control	Manual
Light Type	LED / Laser Pointer optional



# FIXED X-RAY

## Specifications of The System

### Tube Stand

Vertical travel distance	1500mm
Transverse travel distance	1700mm
Min. Tube height (from floor)	300mm
Max. Tube height (from floor)	1800mm
Column rotation	Standard Fixed( $\pm 90^\circ$ Roation optional)
Tube rotation	optional
Tube SID Range	$\pm 90^\circ$
Tube Console Screen	400-1100mm
Tube Console Screen display info	7" touch screen
Power supply	Set SID/ Real-time SID



### Chest Bucky Stand

Physical Height	1700mm
Vertical travel distance	1500mm
Min. Bucky height (from floor)	200mm
Max. Bucky height (from floor)	1700mm
Focus Distance SID	400-1900mm
Biggest FPD Size	17*17 inch
Control Way	Manual/Electric for options
Chest Bucky Synchronous motion with X-Ray Tube	Yes



### Fixed Radiography table

Table top size	2000*700mm
Table top height	680mm
Table Top Motion Control	Electromagnet control with brake
Table Top Longitudinal Travel distance	250mm
Table Top Transverse travel distance	700mm
Bucky travel distance	650mm
Max. patient weight	200kg
Power supply	DC24V
Table Top Elevating Up-Down	Optional

# FIXED X-RAY

## Specifications of The System

### Single Detector (17"x17")

#### Electric Bucky Stand

- Tube Stand System

#### Configuration

- Electric Bucky Stand
- Tube Stand (Floor Mounted)
- Generator
- PC & Monitor
- Acquire Software
- Flat Panel Detector
- Collimator



### Single Detector / Dual Detector (17"x17")

#### Electric Bucky Stand

- Tube Stand
- Mobile Radiography Table

#### Configuration

- Electric Bucky Stand
- Tube Stand (Floor Mounted)
- Mobile Radiography Table
- Generator
- PC & Monitor
- Acquire Software
- Flat Panel Detector
- Collimator



### Single Detector / Dual Detector (17"x17")

#### Electric Bucky Stand

- Tube Stand
- Fixed Bucky Table (4 way)

#### Configuration

- Electric Bucky Stand
- Tube Stand (Floor Mounted)
- Fixed Radiography Table (4 way floating)
- Generator
- PC & Monitor
- Acquire Software
- Flat Panel Detector
- Collimator





# CONTACT

## US



H. Rifat Pasa Yüzer Havuz Sk. Perpa Ticaret Merkez B Blok Kat:13  
No:2552 34384 SiSli /Istanbul Türkiye



Tel/Fax: +971 43337118  
Sales-Team: +971 58 582 4100  
Technical Support-Team: +971 58 546 4100



[www.imed-inc.com](http://www.imed-inc.com)



[iMedRadiology](https://www.facebook.com/iMedRadiology)



[imed-inc-company](https://www.linkedin.com/company/imed-inc-company)

---