

# MOBILE X-RAY MACHINE



## MOBILEX 500



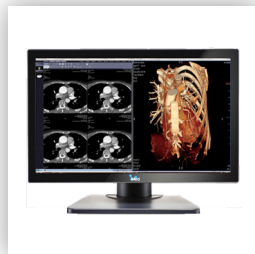
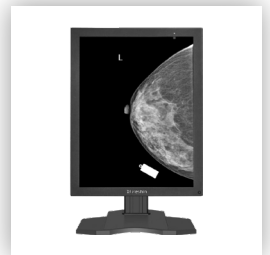
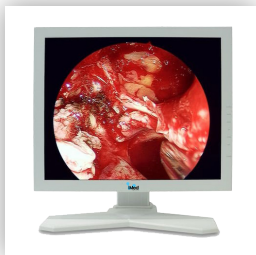
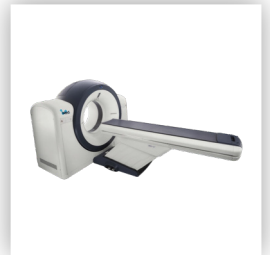
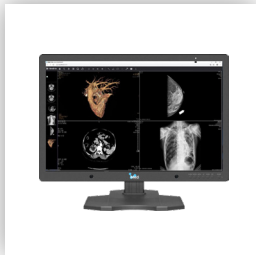
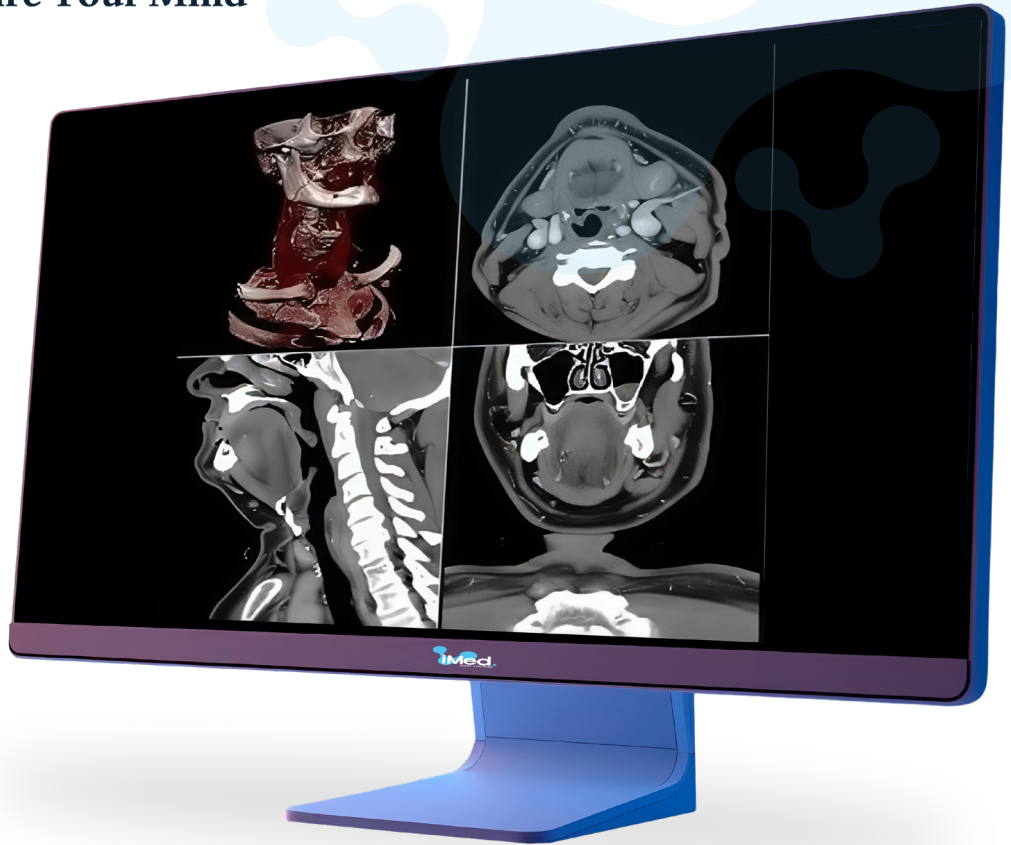
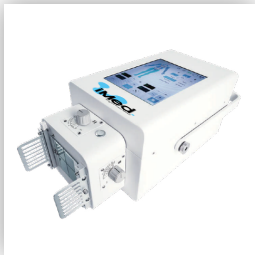
[www.imed-inc.com](http://www.imed-inc.com)

 **MADE IN TURKEY**



# iMed.

Inspire Your Mind



# MOBILEX-500

## MOBILE RADIOGRAPHY SYSTEM DIGITAL



## TECHNICAL SPECIFICATIONS & BENEFITS

- Motorization motion 0-5 km/h (0-3.1 mph)
- Focal point distance from floor sliding column: 491.5mm~2128.5mm
- Focal point distance from column max: 952mm~1475mm
- Lithium Battery to drive system and generator control,
- One full charge can support machine working for 7days.
- Telescopic X-ray tube arm, sliding column
- Tube column rotation:  $\pm 320^\circ$

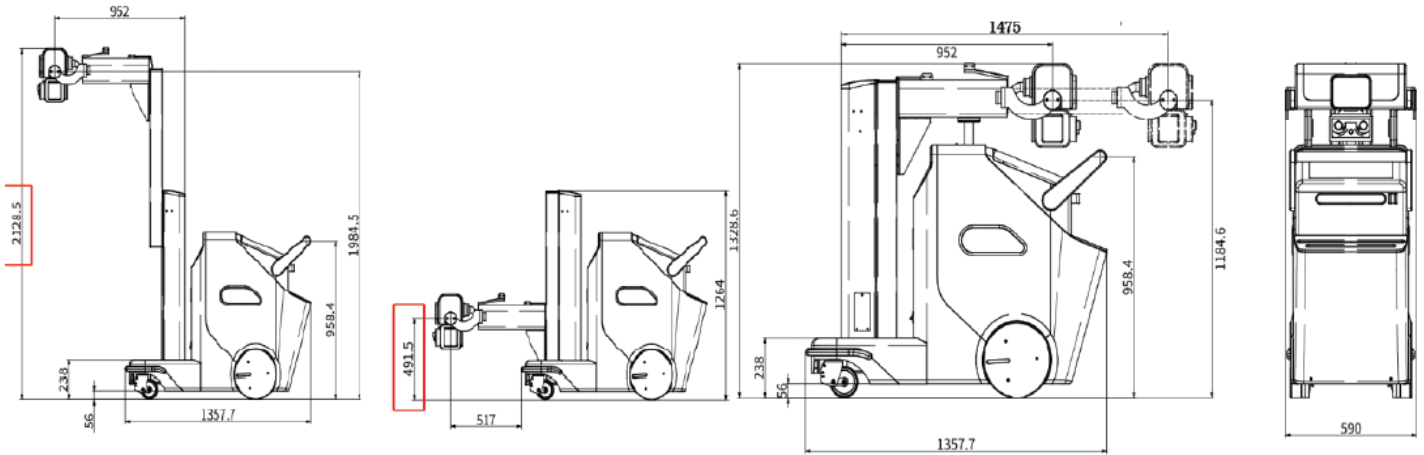
Motorization By Lithium Battery to drive system and generator control,



WIFI



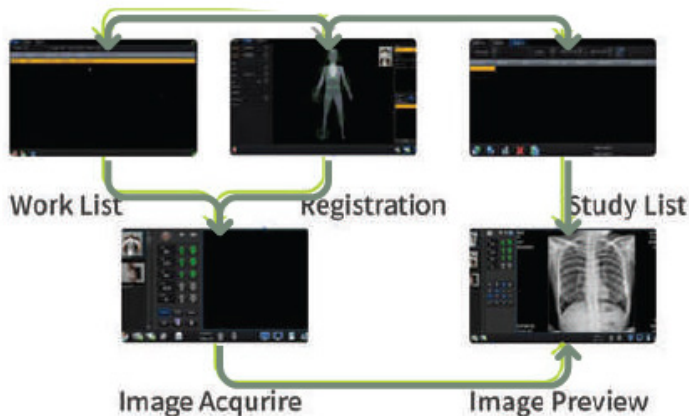
# DIMENSIONS



# DIGITAL SOLUTION



Obtaining the radiological image takes 3-5 seconds (depending on the image size) and is easy to control with the digital touch screen. All operations can be performed using the touch screen.



The MOBILEX-500 is a high-performance, easy-to-use, and powerful machine for every situation in a small emergency room. Depending on high-frequency inverter technology, it is heading for more premium, durable, and high imaging quality and harmony with the built-in ultra-capacitor bank

# Specifications of the MOBILEX-500

## High-voltage Generator

### MOBILEX-500

Power Output	High Frequency 50KW 260KHZ
Power Input	220V, 50HZ 1 Phase
KV Range	40-150 Kv 1Kv Step
mA Range	30-500 mA 10 Steps
mAs Range	0.3-500 mAs
Exposure Time	0.001 to 6 sec
Console Model and Size	19.5" Touch Screen Console & Work Station
Consol Display Kv, mA, Sec, mAs & APR.	Display sec or mAs & Programmable 240 APR
Exposure Switch	3m Wire Hand Switch, WL Remote, Touch Screen

## X-Ray Tube

Focus Anode	CANON JAPANEES X-RAY TUBE 0.6mm/1.2mm
Heat capacity	Rotating Anode
Rotary Anode	230 KHU
	3000 rpm

## Collimator

Light Source	LED
Auto Timer ON/OFF	30sec/Yes
Power	24VAC/VDC
Maximum View-field	48*48cm(@100SID/FFD)
Illuminance	>160LUX
Laser pointer	Yes

## Portable Flat Panel Detector Specification MOBILEX-500

Detector Technology	Amorphous Silicon
Scintillator	CSI
Active Area (mm)	427x427
Pixel Matrix	3072x3072
Pixel Pitch (um)	139u
Spatial Resolution (lp/mm)	3.4
AD Conversion (bit)	16
WIFI	5G, 2.4G IEEE802.11 a/b/g/n/ac
Trigger Mode	AED/Software
Preview Image Time (S)	3
Full Image Time (S)	5
Dimensions (mm)	460x460x15mm
Weight (KG)	3.3
Static Loading	150kg
Anti-water Protection	IPX1

## Workstation & Monitor

RAM	8GB
CPU Model	Intel i5
CPU Speed	3.7GHz
System	Windows 10 English
Display Screen Size	19.5 inch touch screen

## Image Acquisition

The Workstation System includes features for image editing, collection, storage, stitching, processing, printing, transfer, etc. The following digital system detector features and smart software details.

Fully digital imaging: DICOM 3.0 and the PACES network system will make the film-free workflow more convenient and faster than the traditional radiography process. It will reduce patients' exposure to radiation and make imaging easier, faster, and of higher quality. It also includes DICOM worklists, image storage, transferring, printing, and other applications that will significantly improve your workflow



# CONTACT

## US



H. Rifat Pasa Yüzer Havuz Sk. Perpa Ticaret Merkez B Blok Kat:13  
No:2552 34384 SiSli /Istanbul Türkiye



Tel/Fax: +971 43337118  
Sales-Team: +971 58 582 4100  
Technical Support-Team: +971 58 546 4100



[www.imed-inc.com](http://www.imed-inc.com)



[iMedRadiology](#)



[IMed-Healthineers Africa & Middle East](#)

---